

COMMERCIAL BANKS DEPOSITS

COMMERCIAL BANKS DEPOSITS BY SECTORS OF ECONOMY¹

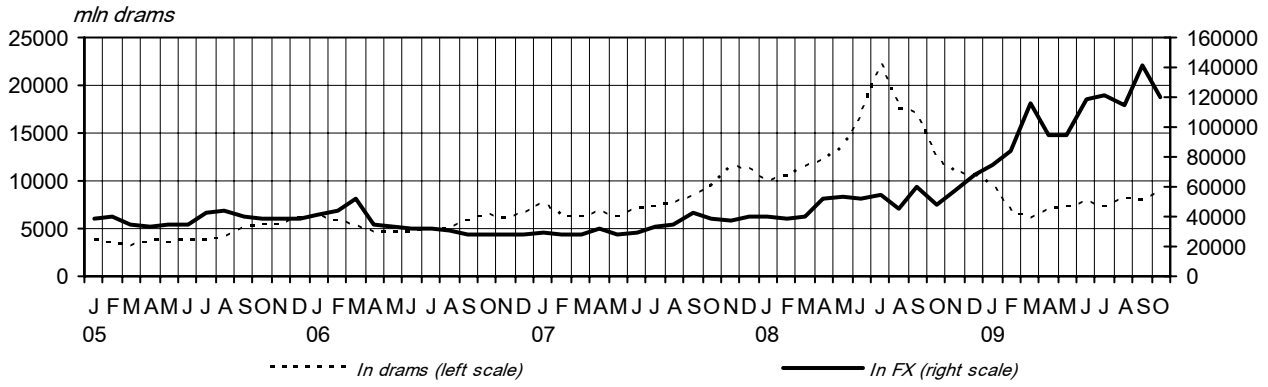
(mln drams)

Deposits	2008	2009									
	D	J	F	M	A	M	J	J	A	S	O
From non-residents²	78044	84662	90561	121583	102021	101911	126677	129288	122974	149303	128526
in FX	67486	75000	83735	115531	95090	94646	118888	121999	114872	141329	119850
in drams	10558	9661	6825	6052	6931	7265	7789	7289	8102	7974	8676
From residents	387846	382319	396953	425210	424370	427022	426285	468469	479679	493489	503175
In drams	216892	194212	153309	142036	140736	140115	141664	162863	161038	168489	169049
Demand deposits(including accounts)	99917	90568	81225	87298	77694	82623	87739	102703	97968	104800	106378
From: Enterprises	55516	51056	44699	52460	42392	45269	49790	60813	57576	60656	60712
Private	45968	39512	32787	32681	31858	33018	36199	50180	48689	49404	49224
With state share	9548	11544	11912	19780	10534	12251	13591	10633	8888	11252	11487
Households	29758	25845	23025	20208	21344	21999	23718	26185	25052	26147	27308
Non-profit organizations	12649	11744	11702	12560	12273	13270	11742	12411	11843	14347	13764
Other financial institutions	1993	1923	1799	2071	1685	2086	2489	3294	3497	3651	4594
Term deposits	116975	103644	72084	54738	63042	57492	53925	60159	63070	63689	62671
From: Enterprises	34207	26575	21367	14653	25363	19249	12126	13635	14480	15428	14222
Private	26648	21496	16197	11048	20280	15414	9992	11457	12229	12442	10393
With state share	7560	5078	5170	3605	5083	3835	2134	2179	2251	2986	3830
Households	67622	63608	42307	33287	31070	31324	32608	35495	36711	35840	36153
Non-profit organizations	8278	7359	5538	4802	4450	4297	5460	7525	6563	5478	5584
Other financial institutions	6868	6102	2872	1996	2159	2621	3731	3504	5317	5765	6712
Repo liabilities to resident real sector	0	0	0	0	0	0	0	0	0	1178	0
In FX	170954	188107	243644	283173	283634	286907	284622	305606	318641	325000	334125
Demand deposits (including accounts)	68478	74757	90330	81372	83204	83616	79624	91051	104241	97974	97875
From: enterprises	40487	47038	57334	39859	41588	38855	36728	44365	53040	41172	46067
Private	36304	41709	48686	36928	38686	34916	33152	40208	49082	36889	40953
With state share	4183	5329	8647	2932	2902	3939	3575	4157	3958	4283	5114
Households	22386	21967	25361	31276	33406	35889	35646	38993	44056	48595	43117
Non-profit organizations	3993	4047	5214	5034	5559	7157	6023	6421	5839	6137	6507
Other financial institutions	1612	1705	2421	5203	2651	1716	1228	1273	1306	2070	2184
Term deposits	102476	113351	153314	201801	200430	203291	204997	214555	214400	227026	236251
From: Enterprises	13986	18071	27979	44702	39001	40745	43671	44071	38350	40382	45026
Private	13623	12465	24840	40782	37803	40003	43240	43277	37595	39225	43826
With state share	364	5606	3140	3920	1198	742	431	795	755	1157	1200
Households	82173	87408	112100	140412	141832	143633	142095	149345	155178	165059	168919
Non-profit organizations	5338	6061	8517	11191	11249	10265	10065	10130	9997	9905	10334
Other financial institutions	978	1811	4719	5495	8348	8648	9166	11008	10875	11680	11972
Total deposits	465890	466981	487514	546793	526391	528933	552962	597757	602653	642792	631701

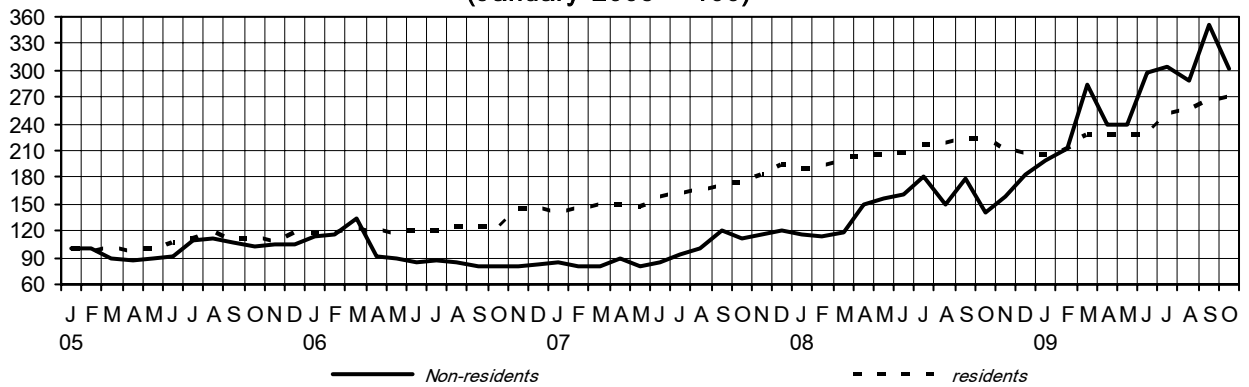
¹ Excluding accrued interest.

² Comprises demand (including accounts) and term deposits of non-resident enterprises, households, non-profit organizations, non-bank financial institutions and international financial organizations

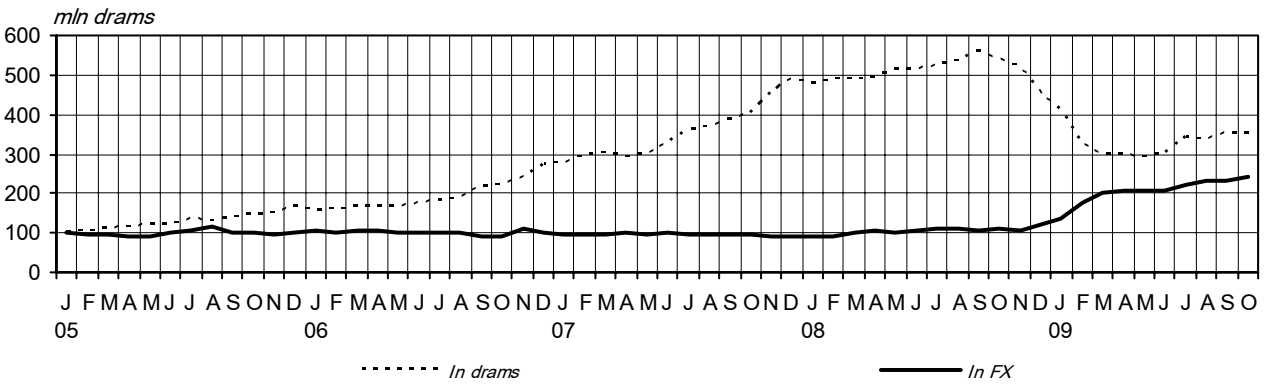
Non-residents' Deposits by Currency



Residents and Non-residents' Deposits (January 2005 = 100)



Residents' Deposits by Currency (January 2005 = 100)



Residents' Deposits by Currency (January 2005 = 100)

